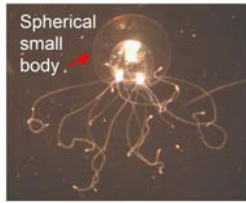
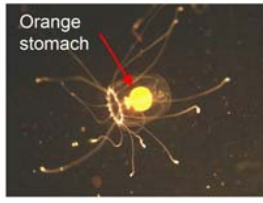


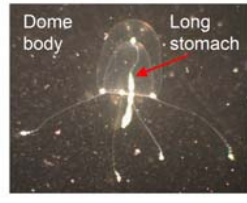
## On-Shore Indicators: Irukandji less likely



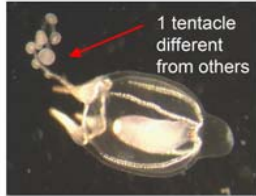
Bougainvillia



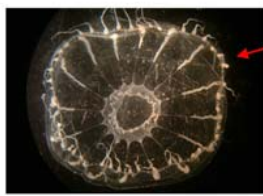
Turritopsis



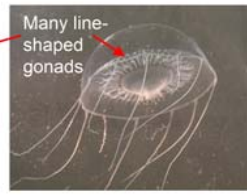
Sarsia



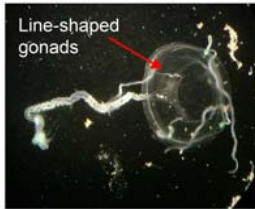
Euphysora



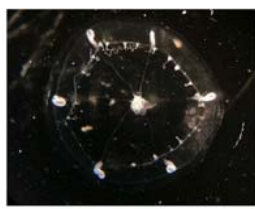
Aequorea



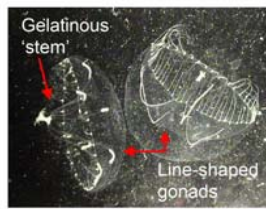
Aequorea



Eutima



Eirene (bottom view)



Eirene (side view)



Porpita



Muggiaea



Mastigias

## Ctenophores



Pleurobrachia

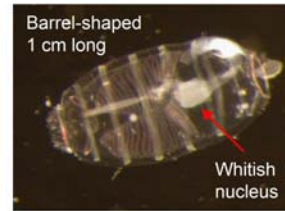


Beroe

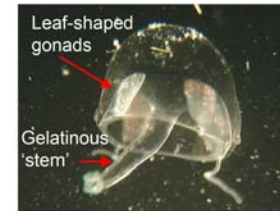


Bolinopsis

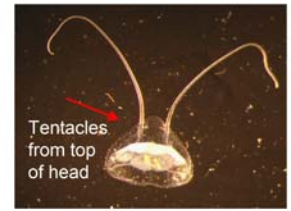
## Off-Shore Indicators: Irukandji more likely



Salp



Liriope



Solmundella

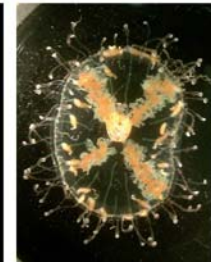
## Medically Important



Cyanea



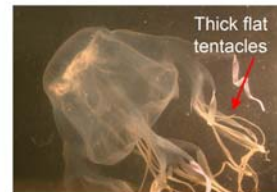
Pelagia



Olindias



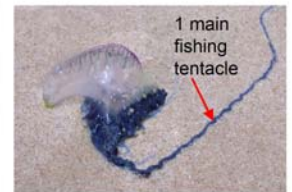
Carybdea (herpes)



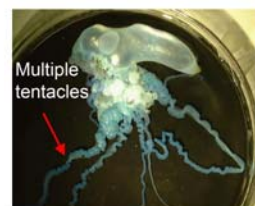
Chironex fleckeri  
Box jellyfish



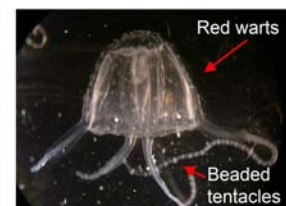
Chiropsella bronzie  
Box jellyfish



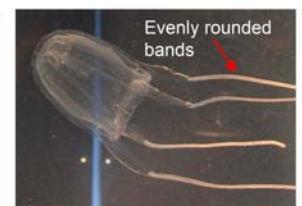
Physalia utriculus  
blue bottle



Physalia  
(Irukandji-like illness)



Carukia barnesi  
Onshore Irukandji



Pseudo-Irukandji  
Offshore Irukandji

